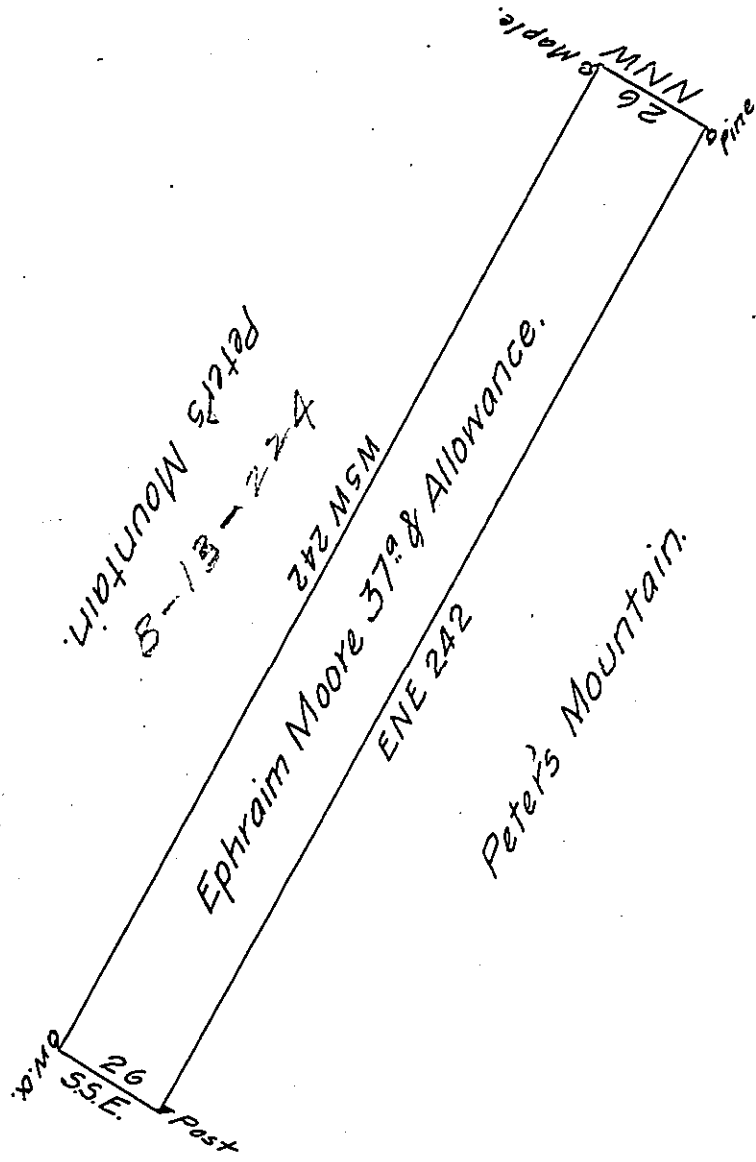


\* The Application N<sup>o</sup> 530 dated August 16<sup>th</sup> 1765.



Surveyd to Ephraim Moore on the 16<sup>th</sup> October 1765 the above  
 discribed Thirty seven Acres & Allowance Situate on the North side  
 of Peter's Mountain Lancaster County By \*Application of the  
 day of \_\_\_\_\_ Numb<sup>d</sup> \_\_\_\_\_

# Bartrem Galbraith D.S.

To John Lukens Esq<sup>r</sup> }  
 Surv<sup>r</sup> Generall }

IN TESTIMONY that the above is a copy of the original remaining on file in  
 the Department of Internal Affairs of Pennsylvania, made  
 conformably to an Act of Assembly approved the 16th day of  
 February, 1833, I have hereunto set my Hand and caused  
 the Seal of said Department to be affixed at Harrisburg,  
 this twenty eighth day of December 1905.

*Geo. N. Brown*  
 Secretary of Internal Affairs.